

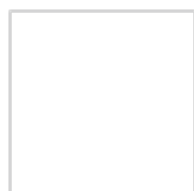
furnituredesignhouse®



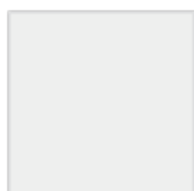
MODERN ITALIAN COLLETION

MATERIALS CATALOG

TECHNOPOLYMER FINISHES



10-White



11-Linen



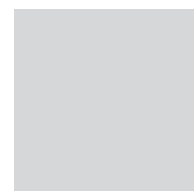
15-Dove Grey



81-Anthracite Grey



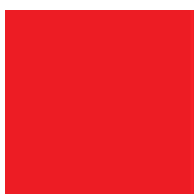
86-Graphite



82-Light Grey



30-Orange



40-Red



42-Geranium Red



20--Yellow



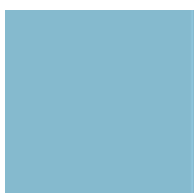
22-Mustard Yellow



51-Light Green



56-Olive Green



62-Light Blue



63-Air-Force Blue



60-Blue



73-Terracotta



72-Cocoa



70-Bronze



80-Black



222-White + Dove Grey



211-White + Orange



212- White + Red



221- White + Light Green

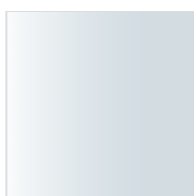


213- White + Blue

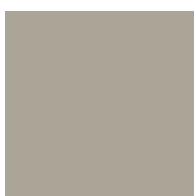


214-White + Anthracite

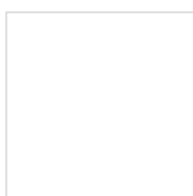
POLYCARBONATE



100-Transparent



315-Glossy Dove Grey

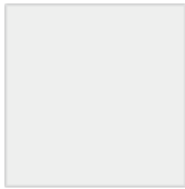


310-Glossy White



183-Transparent Smoked

POST CONSUMER INDUSTRIAL TECHNOPOLYMER



11-Linen



15-Dove Grey



17-Caramel



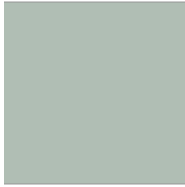
81-Anthracite



22-Mustard Yellow



56-Olive Green



58-Sage Green

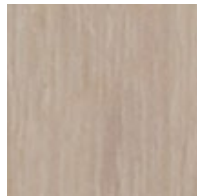


63-Air-Force Blue

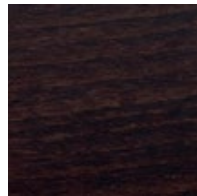
WOOD FINISHES



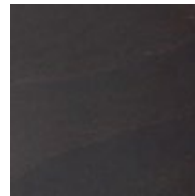
FN-500-Natural Beech



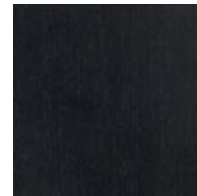
FS-501-Bleached Beech



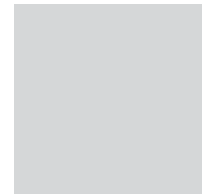
FW-502-Wenge Stained Beech



FK-503-Smoke Beech



FB-Black Stained Beech



FG-504-Grey Stained Beech



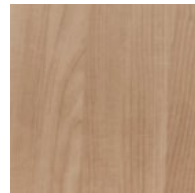
FA-Matt Aquamarine
Lacquered Beech
Bleached Ash



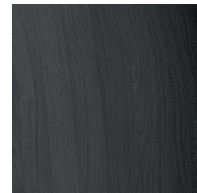
HS- Bleached Ash



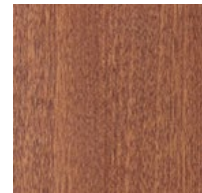
HW-White Stained Ash



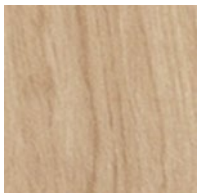
HN-Blond Stained Ash



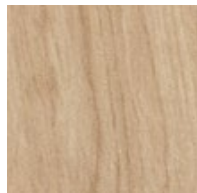
HB-Black Stained
Visible Grain



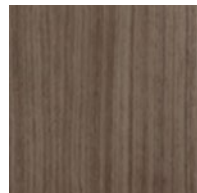
Iroko



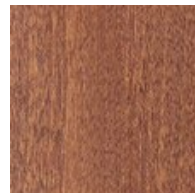
RN-Natural Oak



NR-Black Stained Oak



NC-Canaletto Walnut



MS-Sapelli Mahogany

STEEL



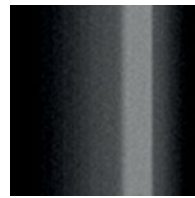
OS-Satin Brass Finish Steel



OM-Matte Gold Finish Steel



BV-Vintage Bronze Finish Steel



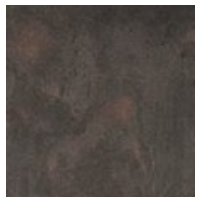
NL-Glossy Black Nickel Finish Steel



NO-Matte Black Nickel Finish Steel



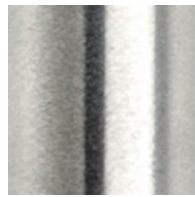
NB-Matte Nickel Finish Steel



KE-Corten Effect Steel



CR-Chromed Steel



IS-Satin Stainless Steel



IL-Polished Stainless Steel

COATED STEEL



VB-Matt White Coated Steel Smooth Finish

COATED STEEL – EMBOSSED FINISH



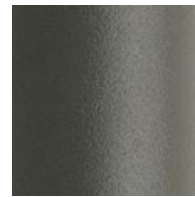
VL-Matte Linen



VT-Matte Dove Grey



VF-Bronze



VF-Matted Graphite



VA-Matte Anthracite



VN-Matte Black



VY-Matte Mustard



VE-Matte Terracotta



VO-Matte Olive Greene



VO-Matte Air-Force Blue

ZINC AND POLYESTER POWDER COATED STEEL

INDOOR/OUTDOOR USE



ZB-White



ZL-Lined



ZT-Dove Grey



ZA-Anthracite



ZY-Mustard Yellow



ZE-Terracotta



ZO-Air Force Blue



ZP-Antique Pink



ZV-Olive Green



ZN-Black

SUMMER AND LEO COLLECTIONS



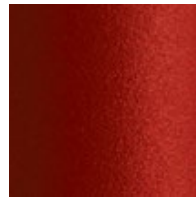
VB-White



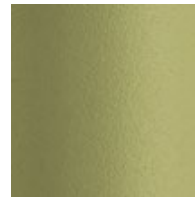
VT-Dove Grey



VA-Anthracite



VM-Brick Red



VV-Willow
Green



VZ-Light Blue

ALUMINUM



AA-Anodized
Aluminum



AL-Polished Aluminum



AV 10-Aluminum
Embossed Finish



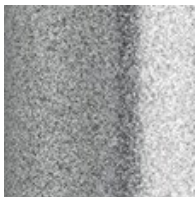
AV 15-Matte Dove
Grey



AV 70-Matte Bronze
Coated Aluminum
Embossed Finish

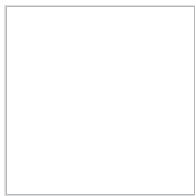


AV 81-Matte
Anthracite Coated
Aluminum Embossed
Finish

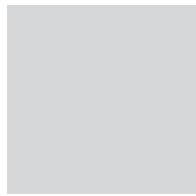


AV 84-Silver Coated
Aluminum Polished
Finish

TABLETOP – COMPACT LAMINATE



10-White



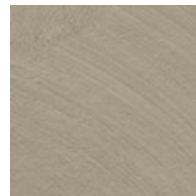
82-Light Grey



81-Anthracite



15-Dove Grey



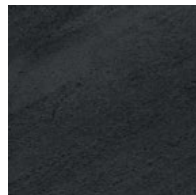
92-Dove Grey Spatula Effect



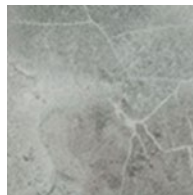
93—Piasentia Stone Effect



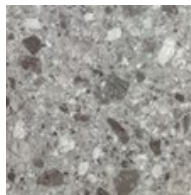
87-Concrete Effect



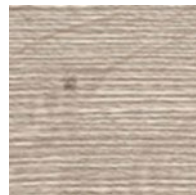
94-Slate Effect



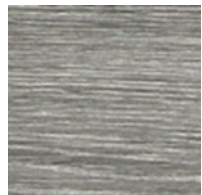
90-Stone Effect



91-Grit Effect



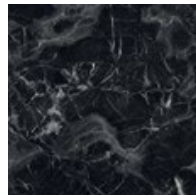
570-Dove Grey Oak



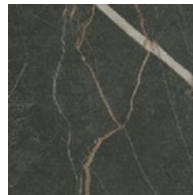
571-Beaver Oak



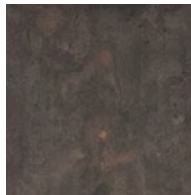
572-Carara Marble Effect



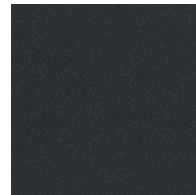
574-Black Marble Effect



575-Black Sahara Marble Effect

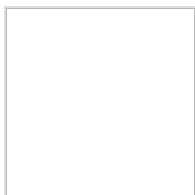


573-Corten Effect

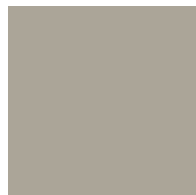


95-FENIX Black Opaque Surface, Anti-Fingerprint & Soft Touch

TABLETOP – GALVANIZED AND POWDER COATED STEEL



10-White



ZT-Dove Grey



81-ZA-Anthracite Grey



ZE-Terracotta



ZO-Air-Force Blue

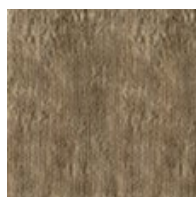


ZV-Olive Green



ZN-Black

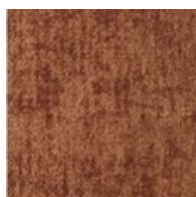
FABRIC – V5 – VELVET – WATER REPELLENT



V5 D7



V5 D8



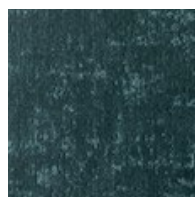
V5 A7



V5 A6

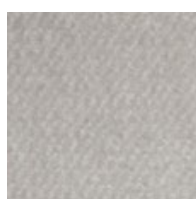


V5 A8



V5 A9

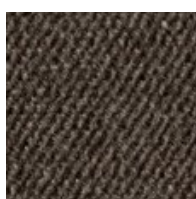
FABRIC – V5 – VELVET – WATER REPELLENT



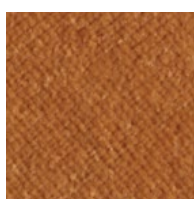
V4 45



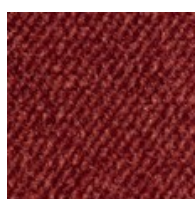
V4 40



V4 44



V4 46



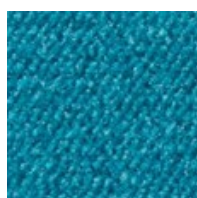
V4 39



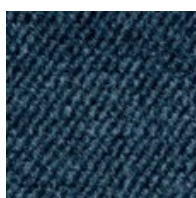
V4 38



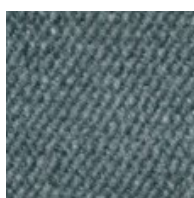
V4 47



V4 50

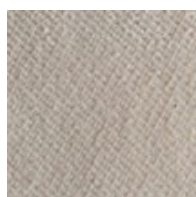


V4 48

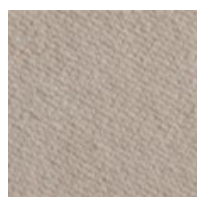


V4 49

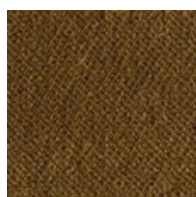
FABRIC – V3 – VELVET FIRE RETARDANT



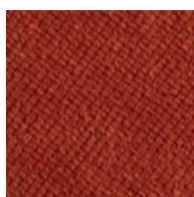
V3 60



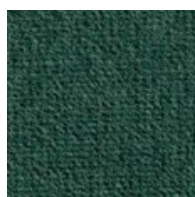
V3 59



V3 62



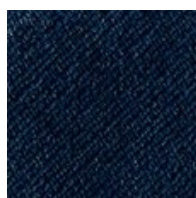
V3 58



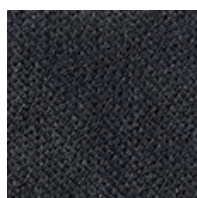
V3 57



V3 64

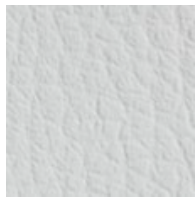


V3 63



V3 66

SIMULATED LEATHER – EP – FIRE RETARDANT



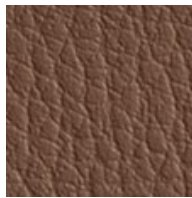
EP 74



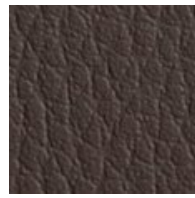
EP E09



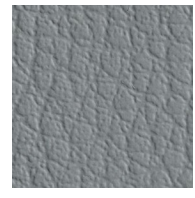
EP 70



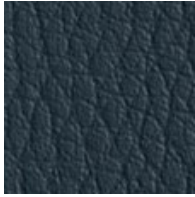
EP 68



EP 73



EP 69



EP 71



EP 75



EP 72



EP E1

WOOL – WF – FIRE RETARDANT



WF 98



WF 95



WF 97

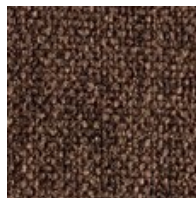


WF 96

FABRIC – T9 – WATER REPELLENT



T9 E2



T9 E3



T9 79



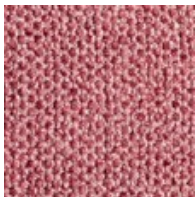
T9 E4



T9 E5



T9 78



T9 65



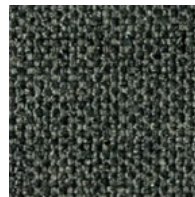
T9 E6



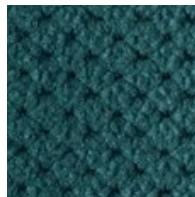
T9 E7



T9 80

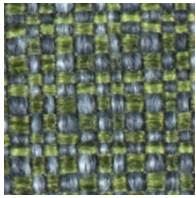


T9 E8

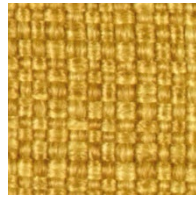


M2 09

FABRIC – T



T5 26



T5 27

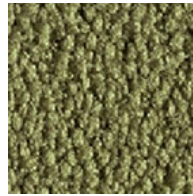
FABRIC – T – FIRE RETARDANT



T4 51



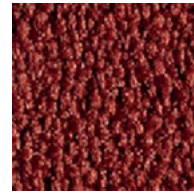
T4 A3



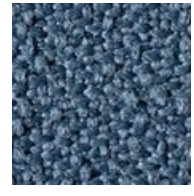
T4 53



T4 A4



T4 A5



T4 D9



T4 56



T4 55



T6 28



T3 25

FABRIC – T – STAIN RESISTANT



T8 06



T8 07



T8 08

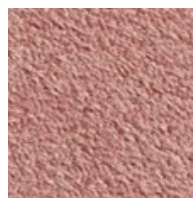
FABRIC – M – FIRE RETARDANT



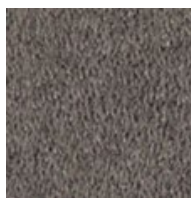
M1 19



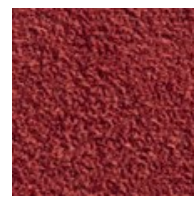
M1 18



M1 17



M1 05

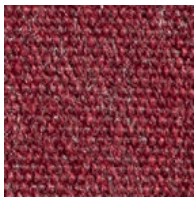


M1 16

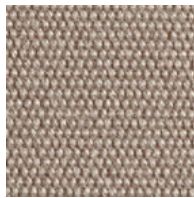


M1 20

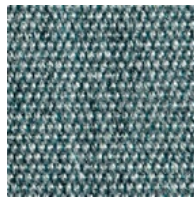
ACRYLIC – WP – WATER REPELLENT



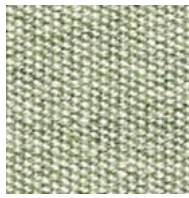
WP 87



WP 88



WP 86

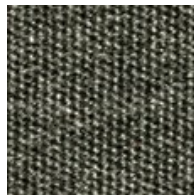


WP 89

ACRYLIC – A6 – WATER REPELLENT – STAIN RESISTANT



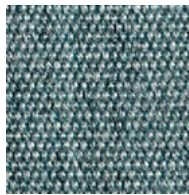
A6 D1



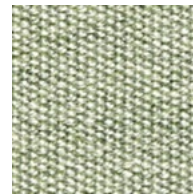
A6 D2



A6 D3



A6 86



A6 89

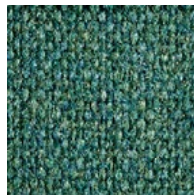
FABRIC – K – FIRE RETARDANT



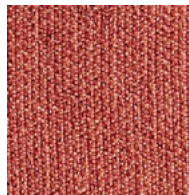
K1 90



K1 99



K1 00



K2 04

LINEN – L – CERTIFIED AND COMPLIANT



L1 04



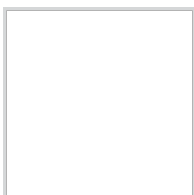
L1 D5



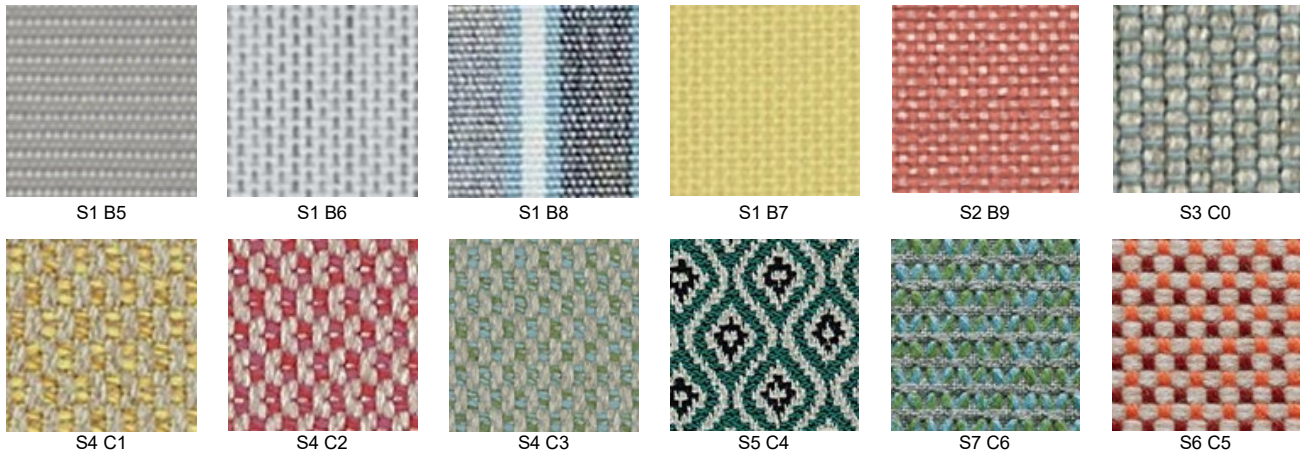
L1 D6

4

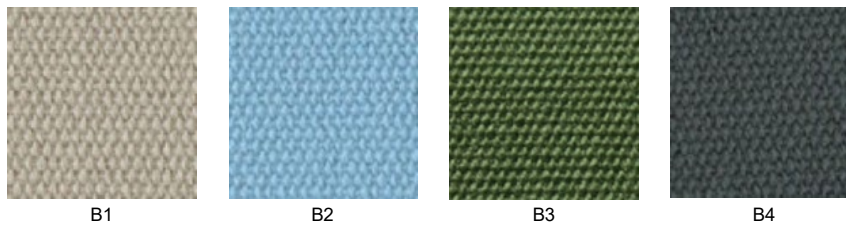
TC – CUSTOMER OWN MATERIAL – 20 Piece Minimum



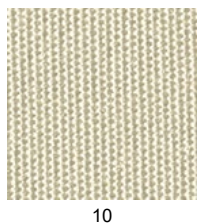
FABRIC – ACRYLIC - FIXED AND MOBILE CUSHIONS OUTDOOR USE – WATER REPELLENT AND STAIN RESISTANT



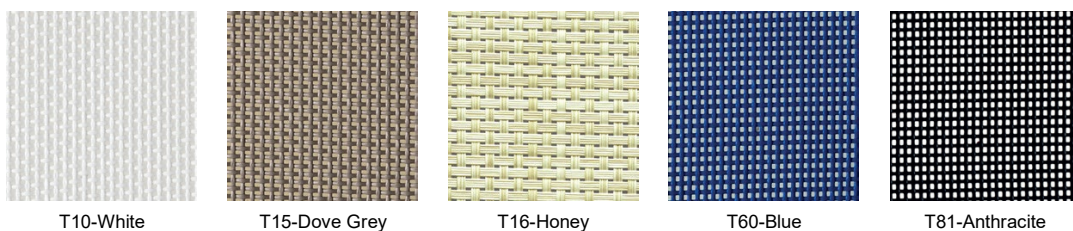
FABRIC – ACRYLIC DRALON® - CUSHIONS FOR Si-Si OUTDOOR USE – WATER REPELLENT AND STAIN RESISTANT



FABRIC – ACRYLIC – CUSHIONS – Summer Chair and Armchair OUTDOOR USE – WATER REPELLENT AND STAIN RESISTANT



SYNTHETIC, BREATHABLE, WATER REPELLENT FABRIC



NAUTICAL ROPE – Lisa Filo

100% Recyclable Polyester – Non-Toxic – Stain Resistant and Easy to Maintain



N84-Silver



N81-Anthracite



N80-Black



N15-Dove Grey



N30-Orange



N57-Mint

EXTRUDED PVC – REINFORCED WITH NYLON WIRES – Lisa Club



P10-Pure White



P86-Graphite



P74-Biscuit



P73-Terracotta

MATERIALS, USE AND MAINTENANCE

RECYCLE

The qualities of responsibility and environmental sustainability in industrial production are a green hope for the future of all of us. Contributing to the process of recycling materials and a production method that respects the environment and keeps it clean is also possible in the production and molding of technopolymer.

All production is made with 100% recyclable materials as their individual components can quickly be sorted for disposal. Every plastic element has the identification mark according to ISO11469:2001 and provides easy directions for recycling.

All materials are of first quality.

PLASTICS

The techno-polymers used have ideal characteristics for manufacturing products that ensure sturdiness, stability, non-toxicity, resistance to atmospheric agents including mold, dust and smog, and resistance to UV rays. All techno-polymers are 100% recyclable in full respect for the environment.

Clean with a neutral liquid soap diluted in water. Use a soft damp cloth to avoid scratches, refrain from using abrasive sponges. Do not use abrasive or chlorine-based products, or solvents in general such as alcohol, benzine, acetone, trichloroethylene, ammonia etc., because these substances tarnish plastic surfaces.

The innovative, exclusive and highly complex molding technology makes all Wave chairs a very original and exclusive model. This technology is quite unique. Any small imperfection that might be present, any color variation, are typical features of the product, that cannot be avoided and that confirm the product is a unique piece.

METALS | STEEL

Only the highest quality steels are used and a strict control on mechanical resistance values is applied throughout the whole manufacturing process.

METALS | ALUMINUM

Aluminum is a metal that combines lightness and great strength, and its surface is anodized, or polyester powder coated, to ensure superior resistance to corrosion. For cleaning, use only a soft damp cloth to clean steel, aluminum or coated metal surfaces. Do not use abrasive creams or pastes to clean metals and do not use solvents. We recommend that you refrain from using abrasive sponges or steel wool to clean the surfaces.

WOOD

For cleaning use a soft suiting damp cloth and warm water and dry immediately with a soft, dry suiting.

Do not use abrasive or aggressive products, chlorine-based products and solvents in general. (ammonia, bleach or cleaning products containing acid). Immediately mop up any spilt liquids with a clean dry cloth, wood does not stand the humidity.

Do not expose to direct sunlight. Do not expose to sources of heat.

Wood is a natural material and shall be subject to change color when exposed to sunlight. Wood is a natural raw material; this means that you cannot guarantee the homogeneity and uniformity of synthetic materials. Even elements made from the same plant may show color differences. Color variations or imperfections, due to the fibers or veins of wood, are a guarantee of the quality of solid wood and constitute its uniqueness. The colors of our woods are water-based, to respect the environment and health.

FABRICS

For instructions on how to clean fabrics, please refer to the specific data sheet. For everyday cleaning do not brush, but vacuum clean regularly, avoiding applying pressure to the fabric. For light stains, use a soft damp brush, using if necessary mild detergents or white vinegar diluted in a lot of water. Do not use abrasive products or detergents or solvents. Do not use high pressure steam washers.

SIMULATED LEATHER

For everyday cleaning, use a soft, damped cloth. For more stubborn dirt, use a soft sponge with water and soap. Do not use abrasive products or detergents or solvents for cleaning. Immediately mop up any spilt liquids with a clean dry cloth.

furnituredesignhouse®

Ho Ho Kus, NJ 07423

201.689.9422

sales@furnituredesignhouse.com
