

# **furniture**designhouse®



## ***MATERIALS CATALOG***

## **FINISH and FABRIC LEGENDS**

<b>AA</b>	Anodized Aluminum
<b>AV</b>	Coated Aluminum
<b>CR</b>	Chromed
<b>IL</b>	Polished Stainless Steel
<b>IS</b>	Satin Stainless Steel
<b>KE</b>	Corten Effect
<b>NL</b>	Black Nickel
<b>OS</b>	Satin Brass Effect
<b>SP</b>	Special Coating
<b>VA</b>	Anthracite Coated
<b>VB</b>	White Coated
<b>VF</b>	Graphite Coated
<b>VL</b>	Linen Coated
<b>VM</b>	Brick Red Coated
<b>VN</b>	Black Coated
<b>VO</b>	Air-Force Blue Coated
<b>VT</b>	Dove Grey Coated
<b>VV</b>	Willow Green Coated
<b>VY</b>	Mustard Yellow Coated
<b>VZ</b>	Light Blue Coated
<b>ZA</b>	Zinc and Anthracite Coated
<b>ZE</b>	Zinc and Terracotta Coated
<b>ZL</b>	Zinc and Linen Coated
<b>ZN</b>	Zinc and Black Coated
<b>ZO</b>	Zinc and Air-Force blue Coated
<b>ZP</b>	Zinc and Antique pink Coated
<b>ZT</b>	Zinc and Dove Grey Coated
<b>ZV</b>	Zinc and Olive Green Coated
<b>ZY</b>	Zinc and Mustard Yellow Coated
<b>F1</b>	Bleached Beech for Chloe Models
<b>FB</b>	Black Stained Beech
<b>FK</b>	Smoke Beech
<b>FN</b>	Natural Beech

<b>FS</b>	Bleached Beech
<b>FW</b>	Wenge Beech
<b>HS</b>	Bleached Ash Wood
<b>NC</b>	Walnut
<b>NR</b>	Black Oak
<b>RN</b>	Natural Oak
<b>HPL</b>	Compact Laminate
<b>TP</b>	Technopolymer
<b>FX</b>	Fixed Foot
<b>AY</b>	Fabric details for upholstered items
<b>CNY</b>	Fabric details for upholstered items
<b>EPX</b>	Fabric details for upholstered items
<b>EPY</b>	Fabric details for upholstered items
<b>KY</b>	Fabric details for upholstered items
<b>MX</b>	Fabric details for upholstered items
<b>MY</b>	Fabric details for upholstered items
<b>TC</b>	Com - customer own material
<b>TX</b>	Fabric details for upholstered items
<b>TY</b>	Fabric details for upholstered items
<b>T4X</b>	Fabric details for upholstered items
<b>T4Y</b>	Fabric details for upholstered items
<b>T7X</b>	Fabric details for upholstered items
<b>V3X</b>	Fabric details for upholstered items
<b>V3Y</b>	Fabric details for upholstered items
<b>V4X</b>	Fabric details for upholstered items
<b>V4Y</b>	Fabric details for upholstered items
<b>WFY</b>	Fabric details for upholstered items
<b>WPX</b>	Fabric details for upholstered items
<b>N...</b>	Nautical Rope for Lisa Filò
<b>P...</b>	Woven Extruded PVC for Lisa Club

## **TECHNOPOLYMER FINISHES**

## POLYCARBONATE



100  
Transparent



130  
Transparent Orange



140  
Transparent Red



183  
Transparent Smoked



340  
Glossy Red



315  
Glossy Dove Grey



310  
Glossy White



380  
Glossy Black

## OVERMOLDED TECHNOPOLYMER - WAVE



201  
Transparent + Linen



204  
Transparent + Orange



206  
Transparent + Red



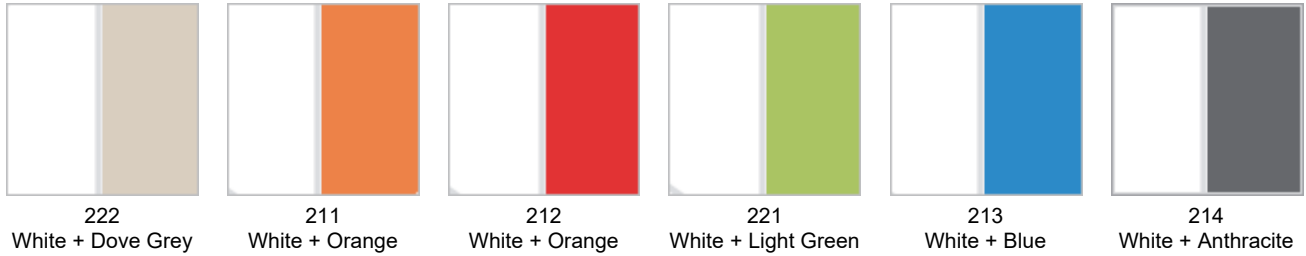
202  
Transparent + Sand



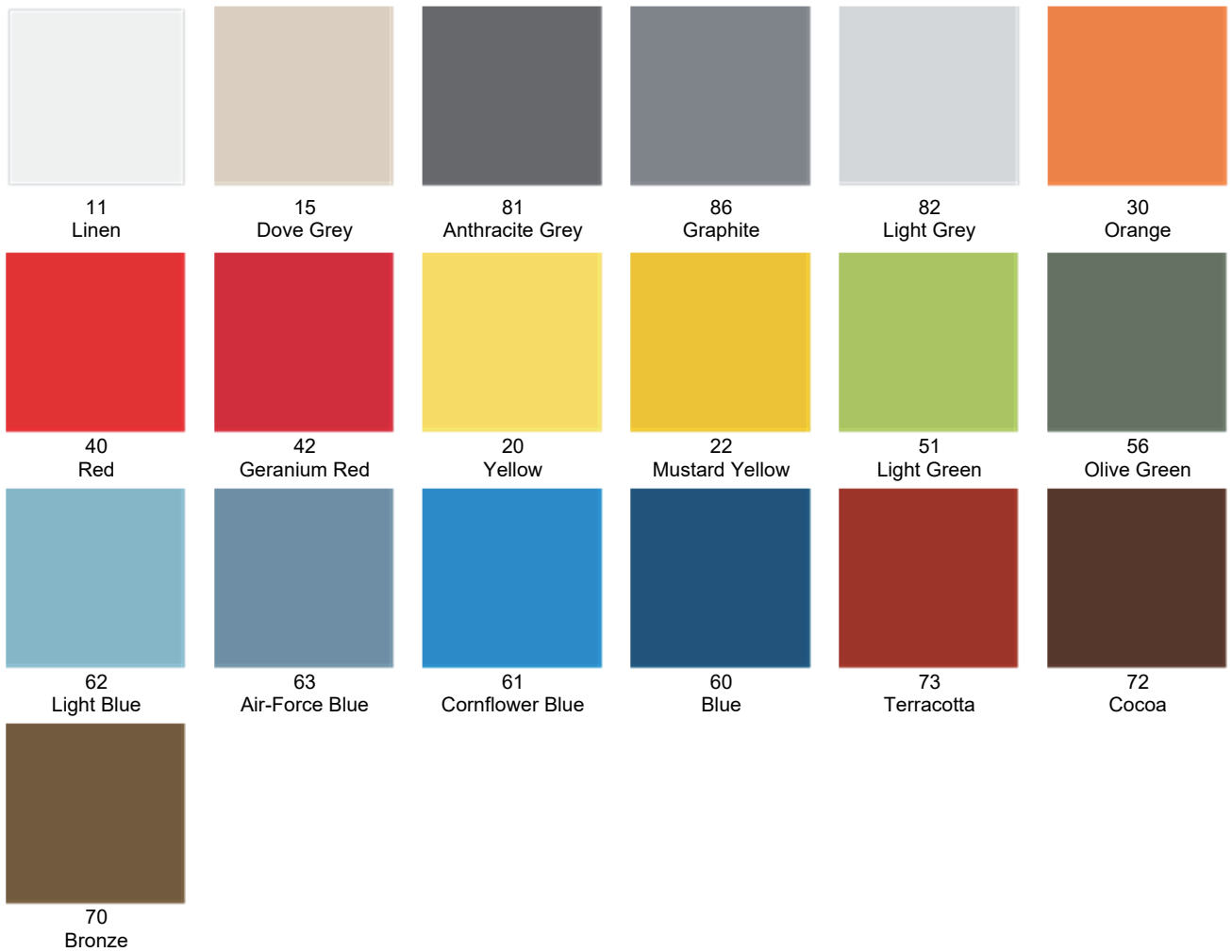
209  
Transparent +  
Anthracite Grey

**TECHNOPOLYMER FINISHES**

**OVERMOLDED TECHNOPOLYMER - BICOLORE**



**TECHNOPOLYMER**





## METAL FINISHES

### ALUMINUM



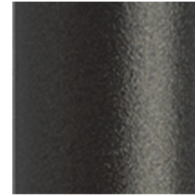
AA  
Anodized Aluminum



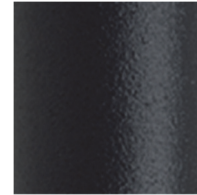
AV10  
Matte White  
Coated Aluminum  
Embossed Finish



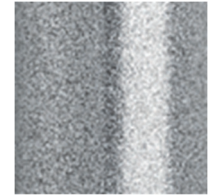
AV15  
Matte Dove Grey  
Coated Aluminum  
Embossed Finish



AV70  
Matte Bronze  
Coated Aluminum  
Embossed Finish



AV81  
Matte Anthracite  
Grey  
Coated Aluminum  
Embossed Finish



AV84  
Silver Coated  
Aluminum  
Polished Finish

### STEEL AND STAINLESS STEEL



CR  
Chromed Steel



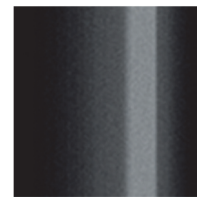
IS  
Satin  
Stainless Steel



IL  
Polished  
Stainless Steel



OS  
Stain Brass  
Effect Steel



NL  
Glossy Black Nickel  
Steel



VB  
Matte White Coated  
Steel Smooth  
Finish



VL  
Matte Linen Coated  
Steel Embossed  
Finish



VT  
Matte Dove Grey  
Coated Steel  
Embossed Finish



VF  
Matte Graphite  
Coated Steel  
Embossed Finish



VA  
Matte Anthracite  
Grey Coated Steel  
Embossed Finish



VN  
Matte Black Grey  
Coated Steel  
Embossed Finish



KE  
Corten Effect Steel



VY  
Matte Mustard  
Yellow Coated  
Steel Embossed  
Finish



VO  
Matte Air-Force  
Blue Coated Steel  
Embossed Finish

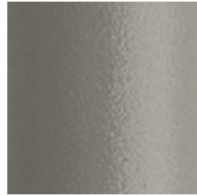
## METAL FINISHES

### ZINC AND POLYESTER POWDER COATED STEEL

#### INDOOR/OUTDOOR USE



**ZL**  
Zinc and Matte Linen  
Coated Embossed  
Finish



**ZT**  
Zinc and Matte Dove  
Grey Coated  
Embossed Finish



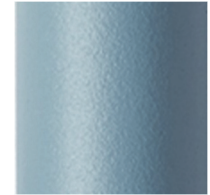
**ZA**  
Zinc and Matte  
Anthracite Coated  
Embossed Finish



**ZY**  
Zinc and Matte  
Mustard Coated  
Embossed Finish



**ZE**  
Zinc and Matte  
Terracotta Coated  
Embossed Finish



**ZO**  
Zinc and Matte  
Air-Force Blue  
Coated  
Embossed Finish



**ZP**  
Zinc and Matte  
Antique Pink  
Coated  
Embossed Finish



**ZV**  
Zinc and Matte  
Olive Green Coated  
Embossed Finish



**ZN**  
Zinc and Matte  
Black Coated  
Embossed Finish

### SUMMER AND LEO COLLECTIONS

### ZINC AND POLYESTER POWDER COATED STEEL

#### INDOOR/OUTDOOR USE



**VB**  
Zinc and White  
Matte Coated Steel  
Embossed Finish



**VT**  
Zinc and Dove Grey  
Matte Coated Steel  
Embossed Finish



**VA**  
Zinc and Anthracite  
Grey Matte Coated  
Steel Embossed  
Finish



**VM**  
Zinc and Brick Red  
Matte Coated Steel  
Embossed Finish



**VV**  
Zinc and Willow  
Green Matte  
Coated Steel  
Embossed Finish



**VZ**  
Zinc and Light Blue  
Matte Coated Steel  
Embossed Finish

## WOOD FINISHES

---

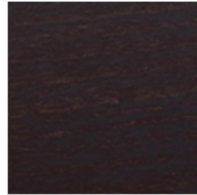
### WOOD



FN-500  
Natural Beech



F1-FS-501  
Bleached Beech



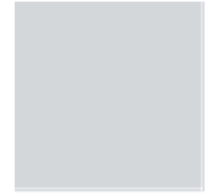
FW-502  
Wenge Stained Beech



FK  
Smoke Beech



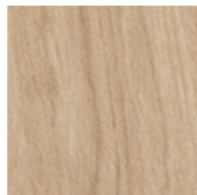
FB  
Black Stained  
Beech



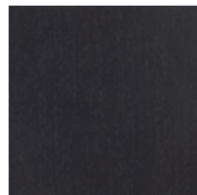
FG-504  
Grey Stained  
Beech



HS  
Bleached Ash



RN  
Natural Oak



NR  
Black Stained Oak



NC  
Canaletto Walnut

**TABLETOP FINISHES**

**COMPACT LAMINATE**



10  
White



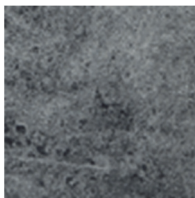
82  
Light Grey



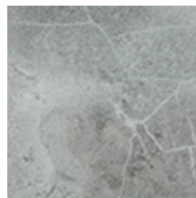
81  
Anthracite



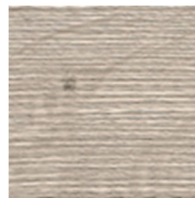
15  
Dove Grey



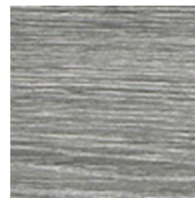
87  
Concrete Effect



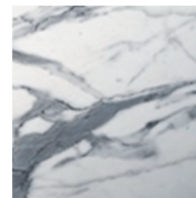
90  
Stone Effect



570  
Dove Grey Oak



571  
Beaver Oak

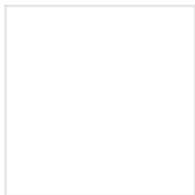


572  
Carrara Marble Effect



573  
Corten Effect

**ZINC AND POLYESTER POWDER COATED STEEL**



10  
White

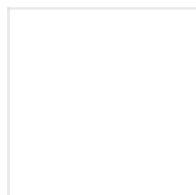


81  
Anthracite Grey

**TEMPERED GLASS**



400  
Transparent



412  
White Lacquered



401  
Smoked Grey



413  
Screen printed



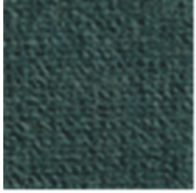
410  
Deco Wave



## FABRICS

---

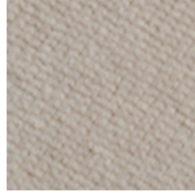
### V3X: VELVET – STANDARD



V3 57



V3 58



V3 59

---

### V3Y: VELVET – ALTERNATE OPTIONS



V3 60



V3 62



V3 63



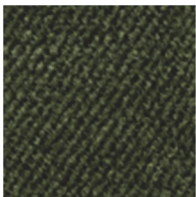
V3 64



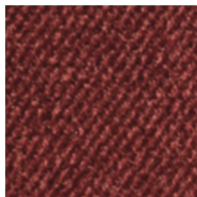
V3 66

---

### V4X: WATER REPELLENT VELVET – STANDARD



V4 38



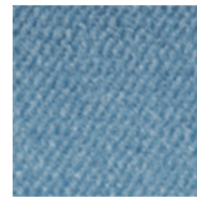
V4 39



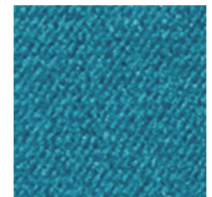
V4 40



V4 44



V4 47



V4 50

---

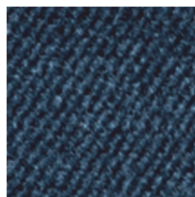
### V4Y: WATER REPELLENT VELVET – ALTERNATE OPTIONS



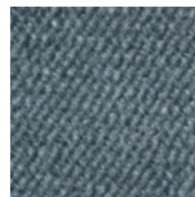
V4 45



V4 46



V4 48



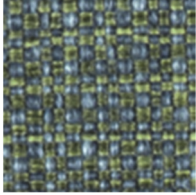
V4 49

---

## FABRICS

---

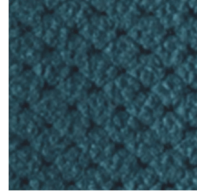
### TX: FABRIC – STANDARD



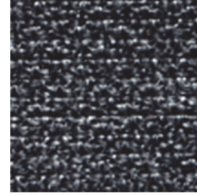
T5 26



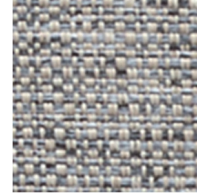
T5 27



M2 09  
Water Repellent



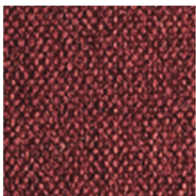
T3 2  
Fire Retardant



T6 28  
Fire Retardant

---

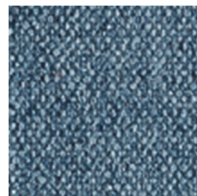
### TY: FABRIC – ALTERNATE OPTIONS – WATER REPLELLENT



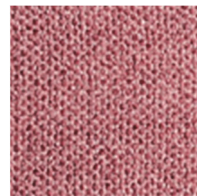
T9 79



T9 79



T9 80

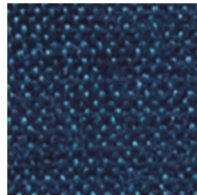


T9 85

### T7X: FIRE RETARDANT FABRIC – STANDARD



T7 29



T7 30

---

### MX: FIRE RETARDANT FABRIC – STANDARD



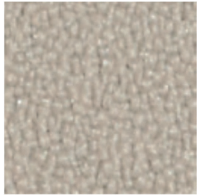
M1 05

---

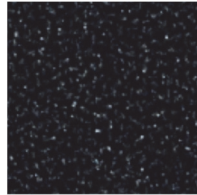
**FABRICS**

---

**T4X: FIRE RETARDANT FABRIC – STANDARD**



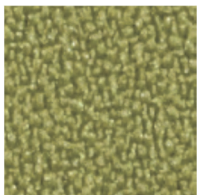
T4 51



T4 55

---

**T4Y: FIRE RETARDANT FABRIC – ALTERNATE OPTIONS**



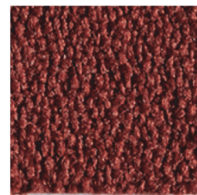
T4 539



T4 A3



T4 A4



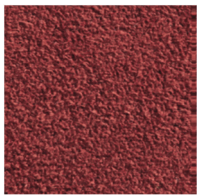
T4 A5



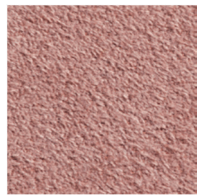
T4 56

---

**MY: FIRE RETARDANT FABRIC – ALTERNATE OPTIONS**



M1 16



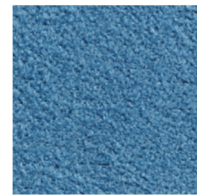
M1 17



M1 18



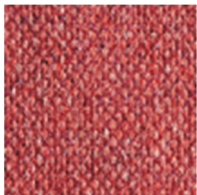
M1 19



M1 20

---

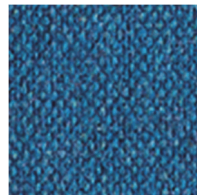
**KY: FIRE RETARDANT FABRIC – ALTERNATE OPTIONS**



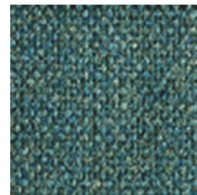
K1 90



K2 04



K1 99



K1 00

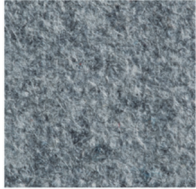


---

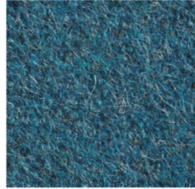
**FABRICS**

---

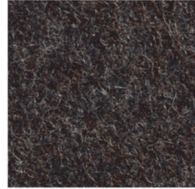
**WFY: FIRE RETARDANT WOOL –ALTERNATE OPTIONS**



WF 95



WF 96

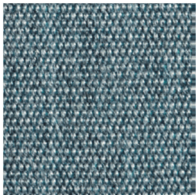


WF 97



WF 98

**WPX: WATERPROOF ACRYLIC FABRIC - STANDARD**



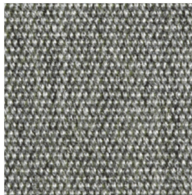
WP 86



WP 87



WP 88



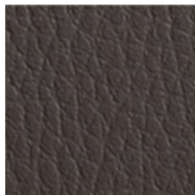
WP 89

---

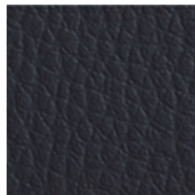
**EPX: FIRE RETARDANT – SIMULATED LEATHER – STANDARD**



EP 70



EP 73



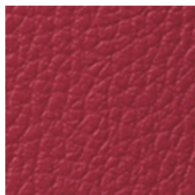
EP 75

---

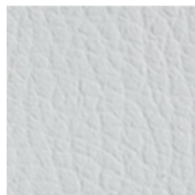
**EPY: FIRE RETARDANT – SIMULATED LEATHER – ALTERNATE OPTIONS**



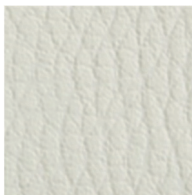
EP 71



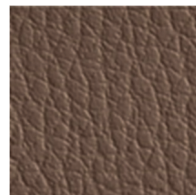
EP 72



EP 74



EP 67



EP 68



EP 69



---

**FABRICS**

---

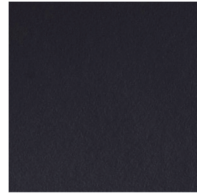
**CNY: NATURAL LEATHER – ALTERNATE OPTIONS**



CN 82



CN 83



CN 84



CN A1



CN A2

---

**AY: STAIN RESISTANT FABRIC – ALTERNATE OPTIONS**



T8 06



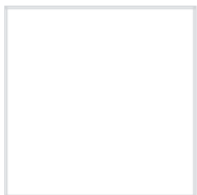
T8 07



T8 08

---

**TC – CUSTOMER OWN MATERIAL – 20 Piece Minimum**



T4 539

**FIXED AND MOBILE CUSHION FABRICS**

---

**FIRE RETARDENT VELVET** (Igloo Chair Cushions)



01



03

---

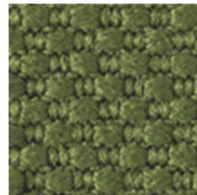
**FIRE RETARDENT FABRIC** (Igloo Chair Cushions)



11



12



13

---

**PANAMA COTTON** (Igloo Chair AND Miss B Cushions)



21

---

**FIRE RETARDENT FABRIC** (Igloo Chair AND Miss B Cushions)



25

---

**FIXED AND MOBILE CUSHION FABRICS**

---

**FIRE RETARDANT FABRIC (Miss B Cushions)**



32

---

**FIRE RETARDANT SIMULATED LEATHER (Miss B Cushions)**



71



72



73

---

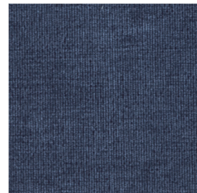
**STAIN RESISTANT FABRIC (Drop Cushions)**



06



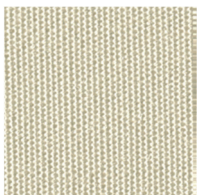
07



08

---

**STAIN RESISTANT OUTDOOR FABRIC (Summer Cushions)**



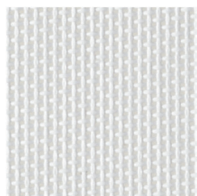
10

---

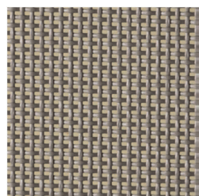
## OTHER FABRICS

---

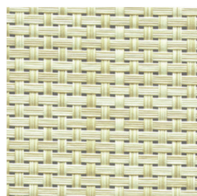
### SYNTHETIC, BREATHABLE, WATER REPELLENT FABRIC



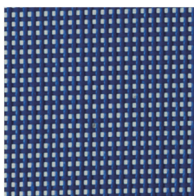
T10



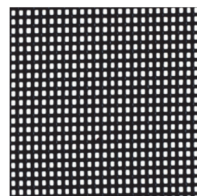
T15



T16



T60



T81

---

### NAUTICAL ROPE (Lisa Filò)



N84



N81



N80



N15



N30

---

### WOVEN EXTRUDED PVC (Lisa Club)



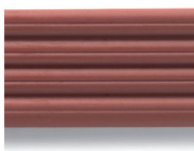
P10



P86



P74



P73

## **MATERIALS, USE AND MAINTENANCE**

---

### **RECYCLE**

The qualities of responsibility and environmental sustainability in industrial production are a green hope for the future of all of us. Contributing to the process of recycling materials and a production method that respects the environment and keeps it clean is also possible in the production and molding of technopolymer.

All production is made with 100% recyclable materials as their individual components can quickly be sorted for disposal. Every plastic element has the identification mark according to ISO11469:2001 and provides easy directions for recycling.

All materials are of first quality.

### **PLASTICS**

The techno-polymers used have ideal characteristics for manufacturing products that ensure sturdiness, stability, non-toxicity, resistance to atmospheric agents including mold, dust and smog, and resistance to UV rays. All techno-polymers are 100% recyclable in full respect for the environment.

Clean with a neutral liquid soap diluted in water. Use a soft damp cloth to avoid scratches, refrain from using abrasive sponges. Do not use abrasive or chlorine-based products, or solvents in general such as alcohol, benzene, acetone, trichloroethylene, ammonia etc., because these substances tarnish plastic surfaces.

The innovative, exclusive and highly complex molding technology makes all Wave chairs a very original and exclusive model. This technology is quite unique. Any small imperfection that might be present, any color variation, are typical features of the product, that cannot be avoided and that confirm the product is a unique piece.

### **METALS | STEEL**

Only the highest quality steels are used and a strict control on mechanical resistance values is applied throughout the whole manufacturing process.

### **METALS | ALUMINUM**

Aluminum is a metal that combines lightness and great strength, and its surface is anodized, or polyester powder coated, to ensure superior resistance to corrosion. For cleaning. Use only a soft damp cloth to clean steel, aluminum or coated metal surfaces. Do not use abrasive creams or pastes to clean metals and do not use solvents. We recommend that you refrain from using abrasive sponges or steel wool to clean the surfaces.

## WOOD

For cleaning use a soft suiting damp cloth and warm water and dry immediately with a soft, dry suiting.

Do not use abrasive or aggressive products, chlorine-based products and solvents in general. (ammonia, bleach or cleaning products containing acid). Immediately mop up any spilt liquids with a clean dry cloth, wood does not stand the humidity.

Do not expose to direct sunlight. Do not expose to sources of heat.

Wood is a natural material and shall be subject to change color when exposed to sunlight. Wood is a natural raw material; this means that you cannot guarantee the homogeneity and uniformity of synthetic materials. Even elements made from the same plant may show color differences. Color variations or imperfections, due to the fibers or veins of wood, are a guarantee of the quality of solid wood and constitute its uniqueness. The colors of our woods are water-based, to respect the environment and health.

## GLASS

Tempered glass table tops pursuant to UNI EN 12150 standards translucent, screen printed or lacquered. For cleaning, use specific cleaning products for windows or a liquid neutral soap diluted in water only. Clean with a soft damp cloth to prevent scratches and dry carefully to maintain shininess. Do not use abrasive or aggressive products.

## FABRICS

For instructions on how to clean fabrics, please refer to the specific data sheet. For everyday cleaning do not brush, but vacuum clean regularly, avoiding applying pressure to the fabric. For light stains, use a soft damp brush, using if necessary mild detergents or white vinegar diluted in a lot of water. Do not use abrasive products or detergents or solvents. Do not use high pressure steam washers.

## SIMULATED LEATHER

For everyday cleaning, use a soft, damped cloth. For more stubborn dirt, use a soft sponge with water and soap. Do not use abrasive products or detergents or solvents for cleaning. Immediately mop up any spilt liquids with a clean dry cloth.

## LEATHER

Only natural vegetable tanned leather is used for its upholstered leather seats. For everyday cleaning, use a soft dry cloth. For more stubborn dirt, use a soft damp cloth. Do not use abrasive products or detergents or solvents for cleaning.